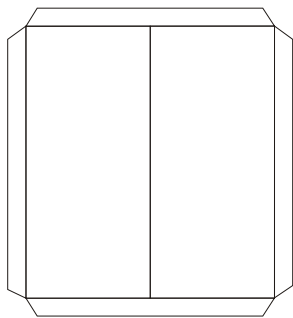


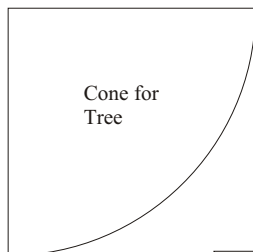
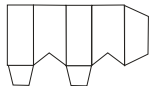


**Gingerbread House Base
to Scale for 1" Dollhouses (1:12)**

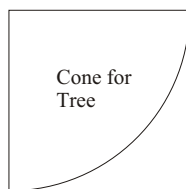


House Roof:
Fold edge tabs and glue
in place for added strength.

Chimney Shape

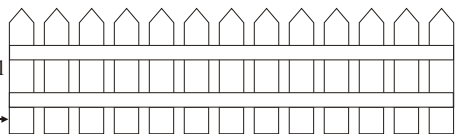
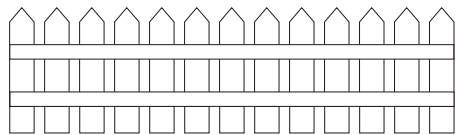
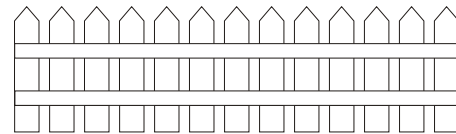
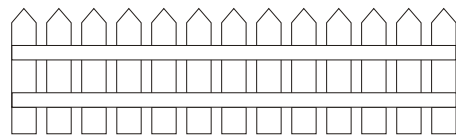


Cone for
Tree

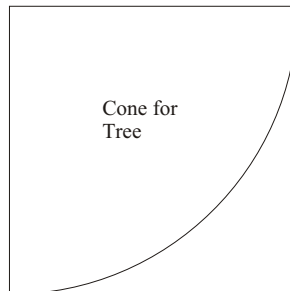
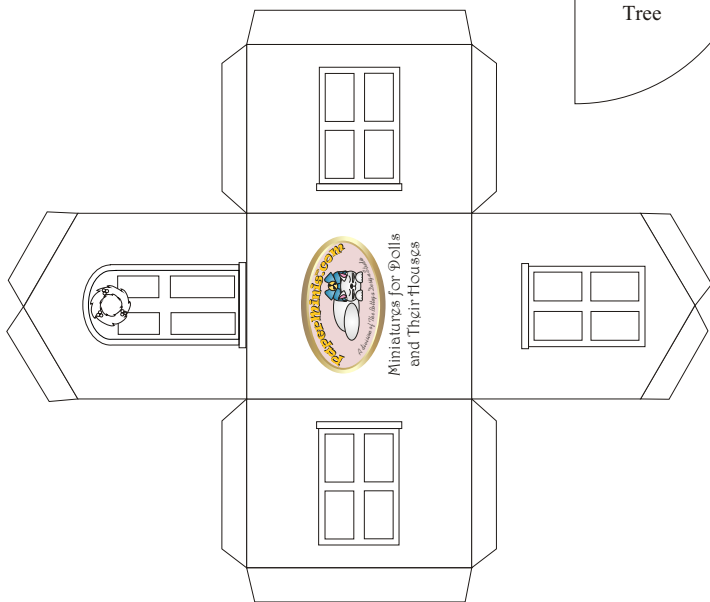


Cone for
Tree

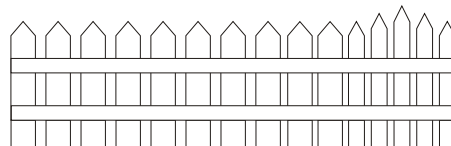
Fence Base:
Fold, cut or make into
gate. Print multiples
to work with.



Fold this panel
at a 90° angle
and use as
a foot to glue
to ground/floor



Cone for
Tree



©Copyright for Paper Minis projects held by Ann Vanture, 2007.
All rights reserved (worldwide rights)
Product is intended for personal use by Paper Minis Club members
and is not to be distributed unasssembled to non-members
<http://www.paperminis.com>

