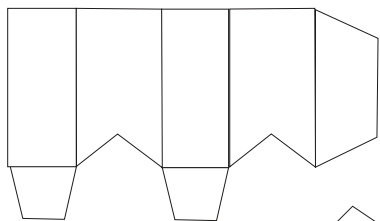
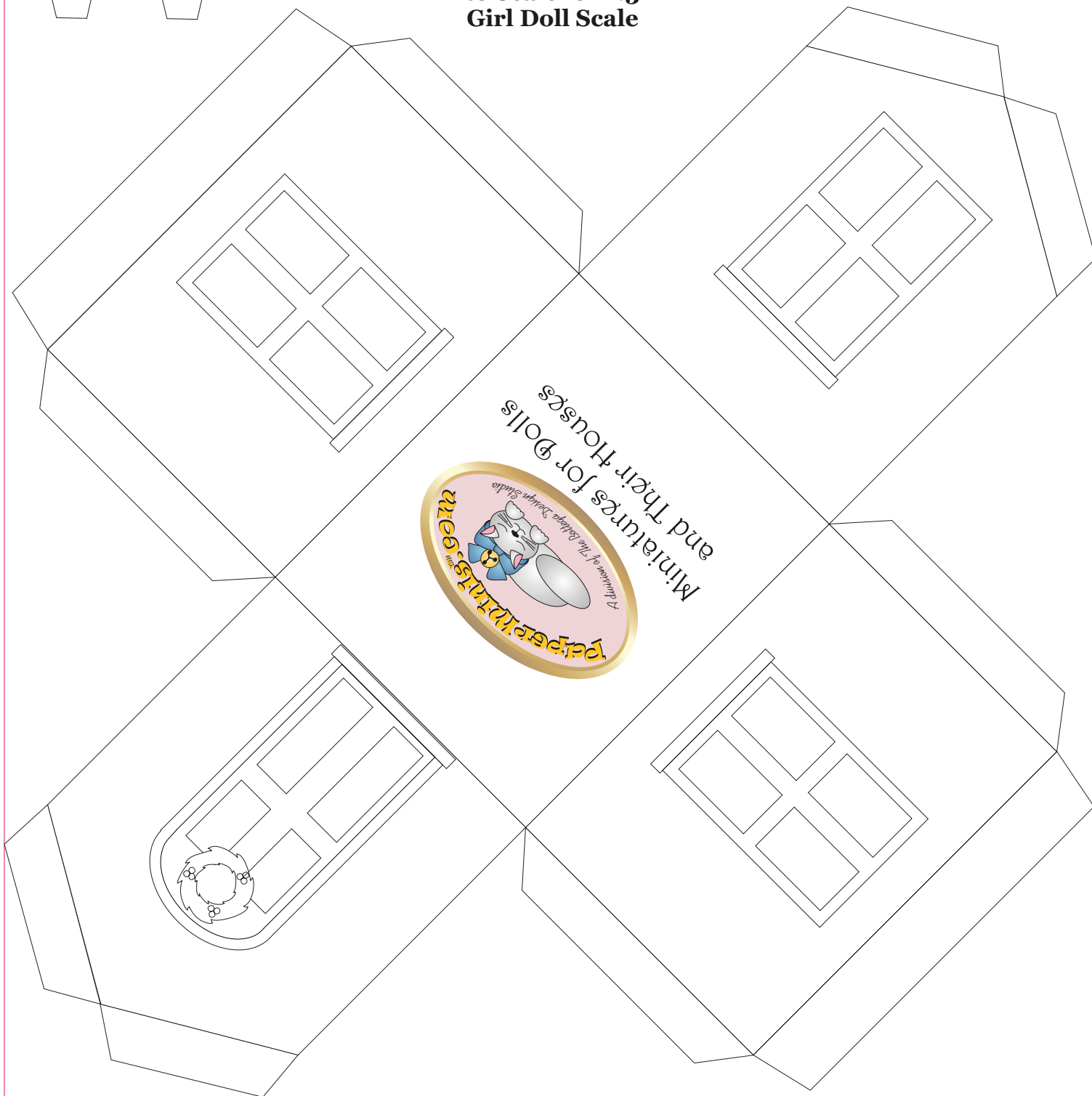


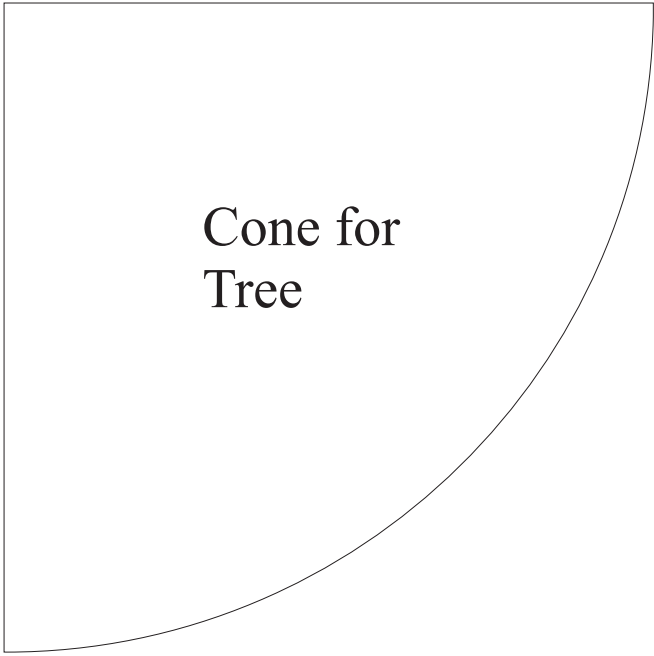
Chimney Shape



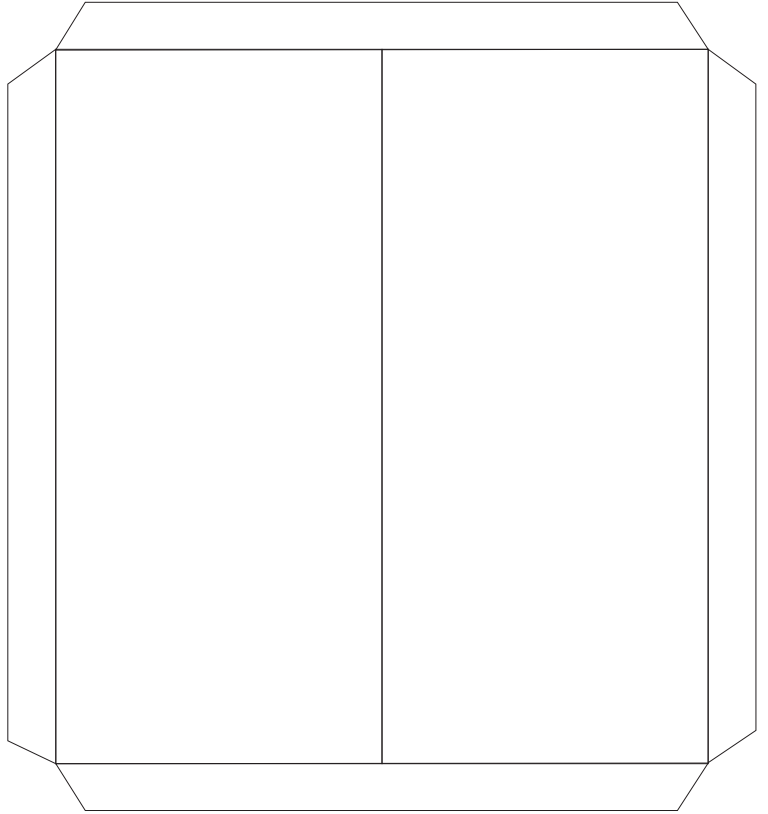
**Gingerbread House Base
to Scale for 1:3
Girl Doll Scale**



©Copyright for Paper Minis projects held by Ann Vanture, 2007 and 2014,
All rights reserved (worldwide rights)
Product is intended for personal use by Paper Minis Club members
and is not to be distributed unassembled to non-members
<http://www.paperminis.com>



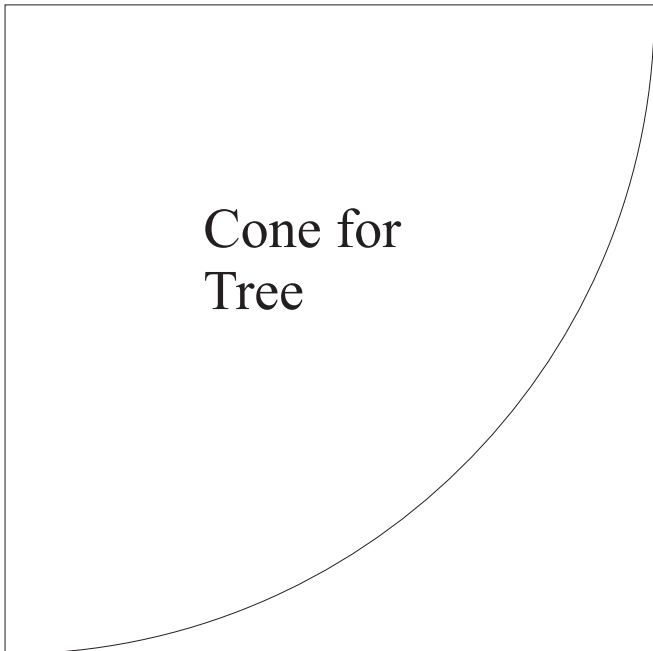
Cone for
Tree



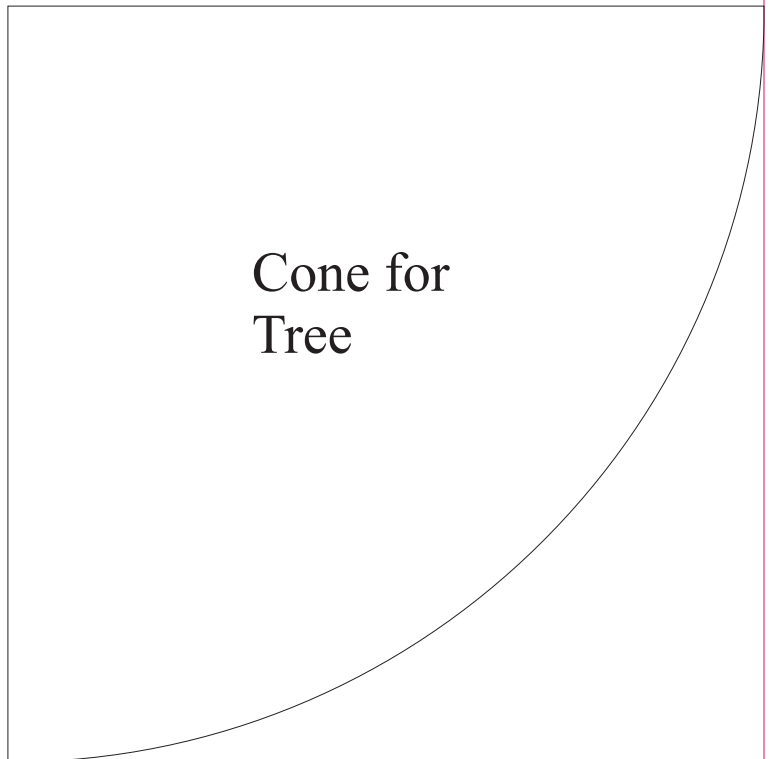
House Roof:
Fold edge tabs and glue
in place for added strength.



Cone for
Tree

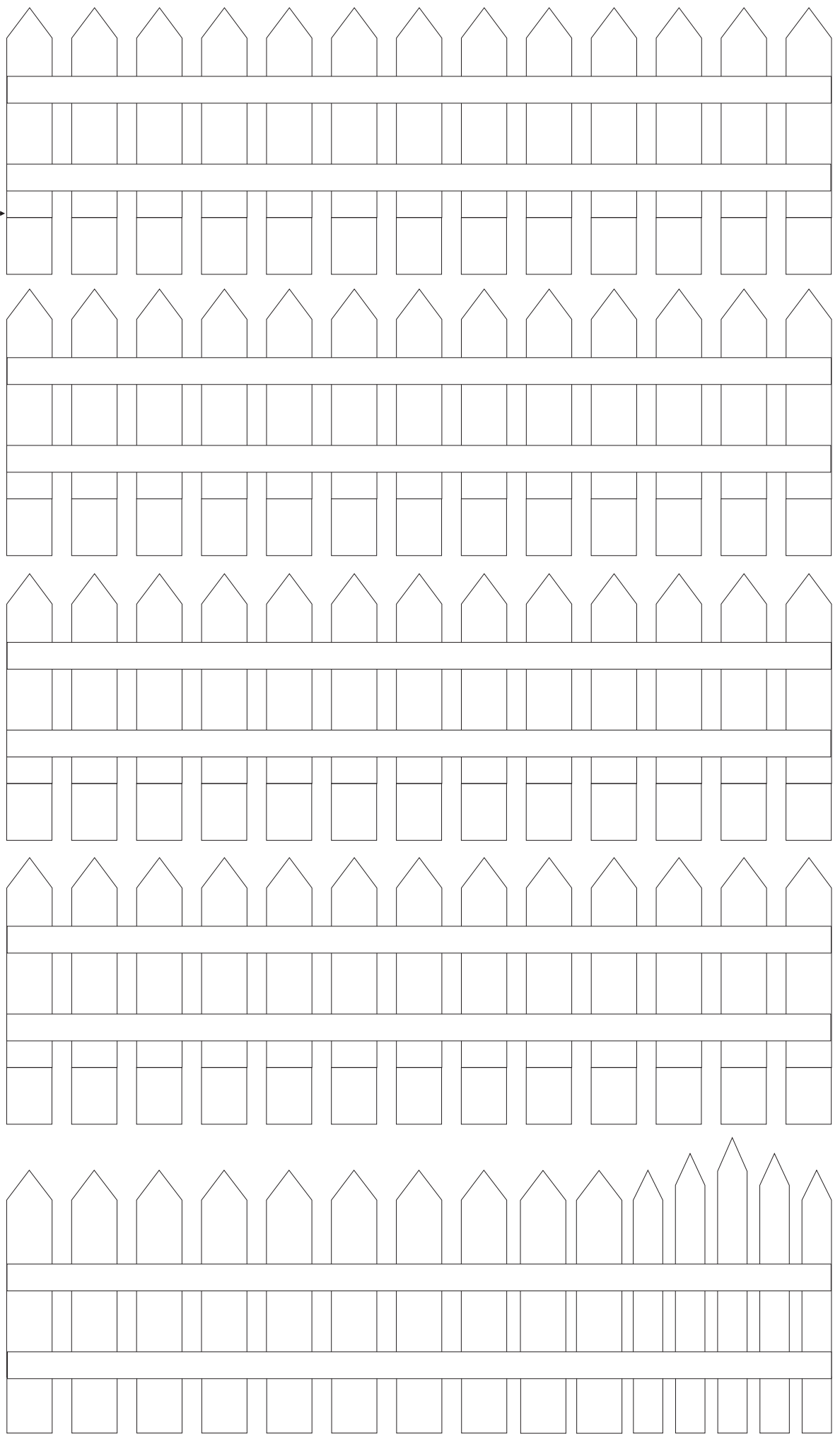


Cone for
Tree



Cone for
Tree

Fold this panel
at a 90° angle
and use as
a foot to glue
to ground/floor



Display Platform

