



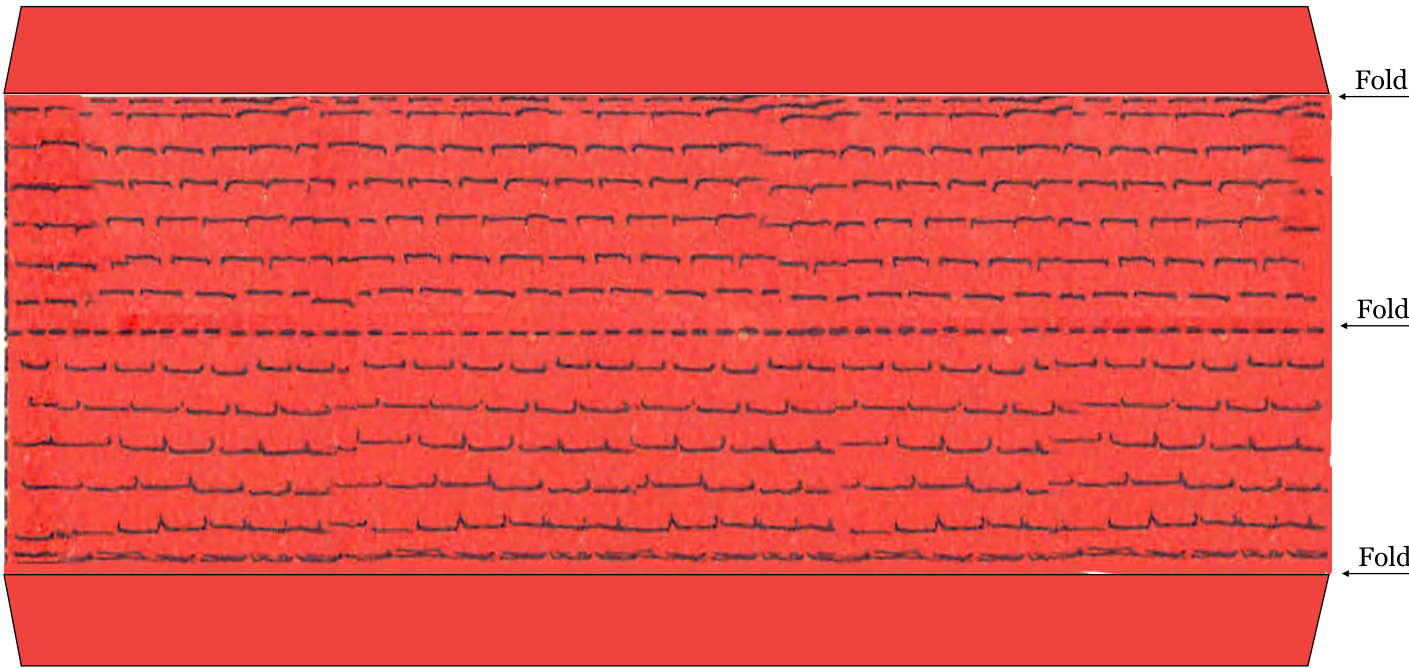
Vintage paper village buildings have been upgraded, re-engineered for easy assembly by Ann Vanture at:

[www.DIYDollAccessories.com](http://www.DIYDollAccessories.com)  
formerly [www.PaperMinis.com](http://www.PaperMinis.com)

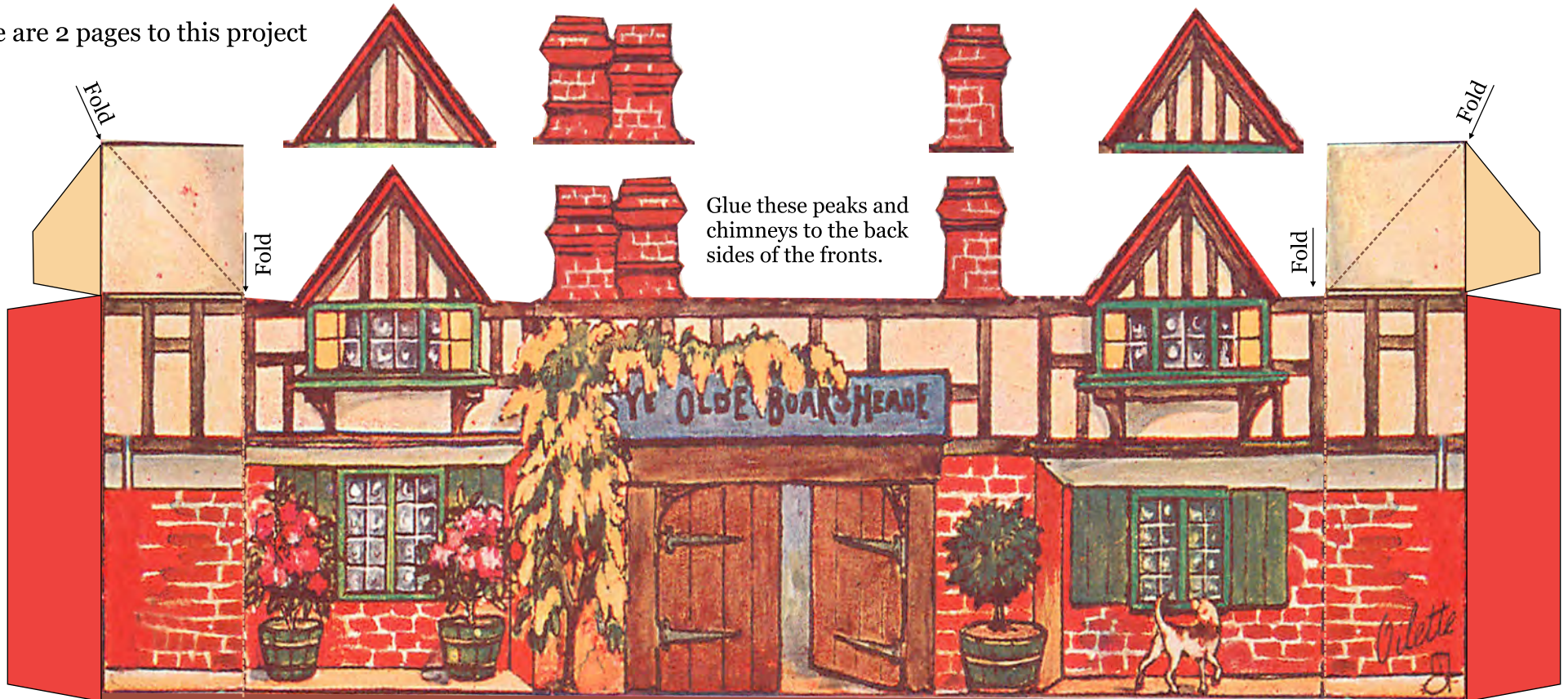
©Copyright for derivative Paper Minis project held by Ann Vanture, 2021  
All rights reserved (worldwide rights)  
Project is for personal use only!

### Ye Olde Boar's Heade Tavern Assembly.

Instructions found on next page.



There are 2 pages to this project



## Ye Olde Boar's Heade Tavern Assembly

1. Cut and fold parts where indicated. Only where indicated
2. Glue chimneys and peaks on reverse sides.
3. Glue tabs at center of tavern's sides.
4. Glue roof on to tavern.



Glue these peaks and chimneys to the back sides of the fronts.

