

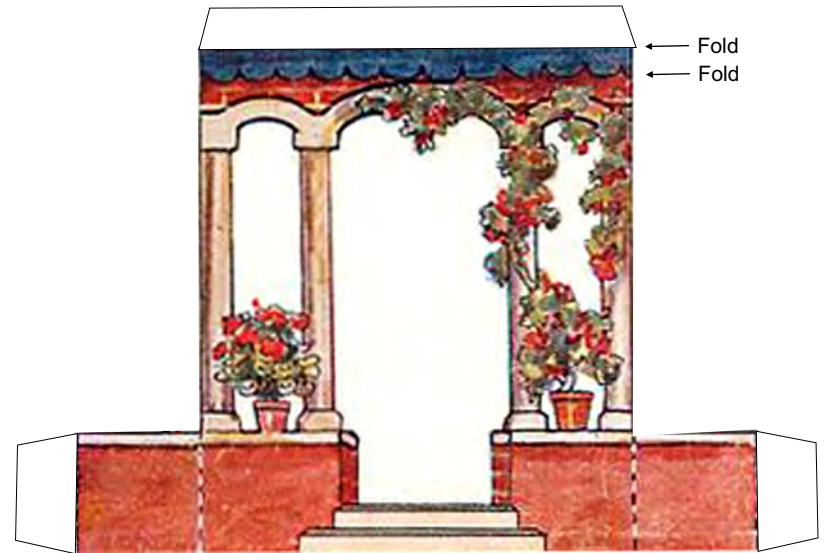
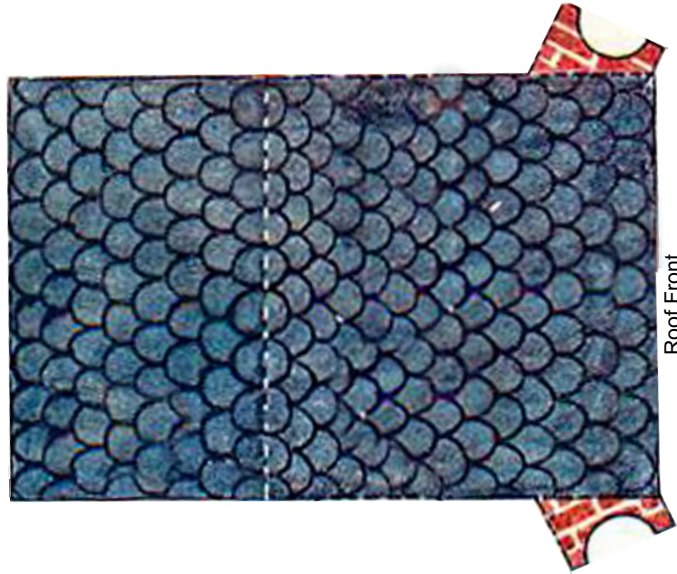
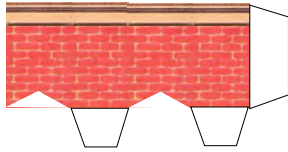
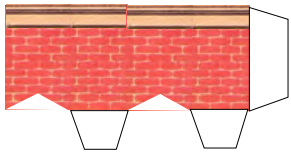


**Miniatures for Dolls
and Their Houses**

Vintage paper village buildings have been
upgraded and made easy-to-build
by Ann Vanture at:

<http://www.PaperMinis.com>

©Copyright for derivative Paper Minis
project held by Ann Vanture, 2019
All rights reserved (worldwide rights)
Project is for personal use only!



Gilette's House with Porch Assembly

1. Fold house and tabs. Glue side tab of house to form box of house.
2. Fold where designated on porch as well as at dotted lines and tabs at base.
3. Glue porch tab to underside of roof front.
4. Cut out white areas of porch entry way.
5. Glue roof to tabs at top of house.
6. Glue tabs found at base of porch front of house.
7. Fold chimneys and glue side tab on each chimney. Glue bottom tabs to top of house.

