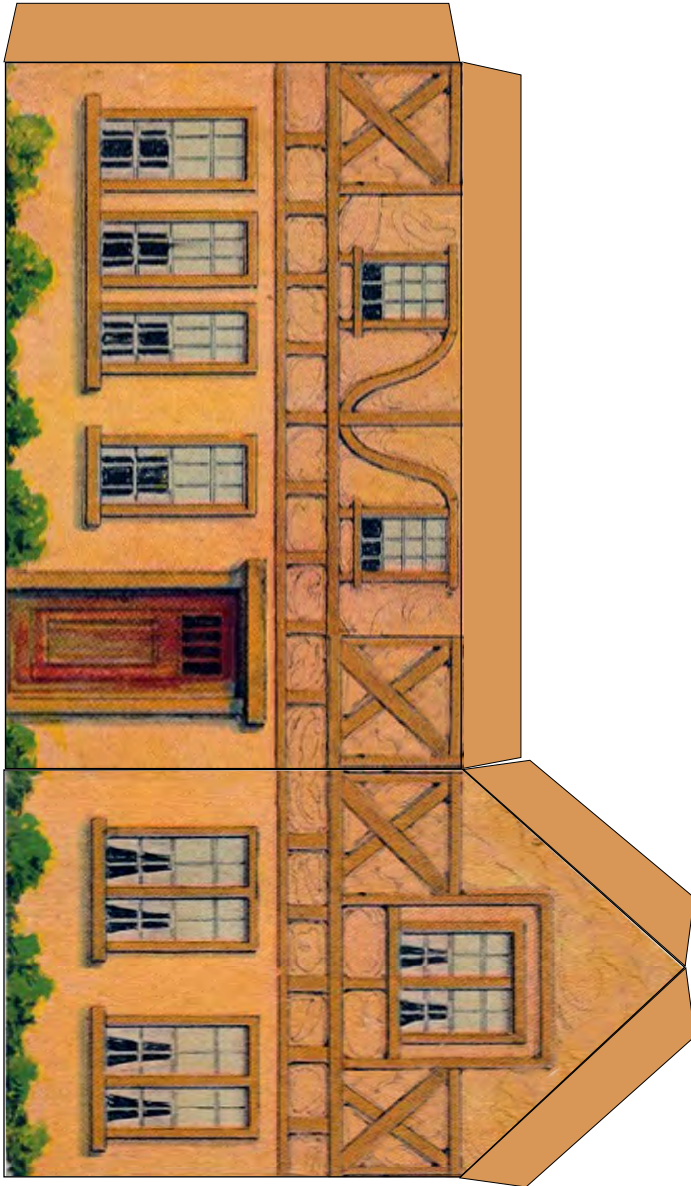


Vintage Boarding House Assembly

1. Fold at tab lines and line at center of roof.
2. Glue long side tabs of house to interior of opposite panel.
3. Glue roof to tabs found along tops of house's side panels.



Miniatures for Dolls and Their Houses

Vintage paper village buildings have been
upgraded and made easy-to-build
by Ann Vanture at:

<http://www.PaperMinis.com>
©Copyright for derivative Paper Minis
project held by Ann Vanture, 2020
All rights reserved (worldwide rights)
Project is for personal use only!

